

Opening Night at the Flower Show

The Northwest Flower & Garden Show returns in early February, 2012, and once again the Arboretum Foundation will kick off the show with its Opening Night Party (formerly Arbor Eden: The Preview Gala). On Tuesday, February 7, guests can enjoy a fabulous evening of delicious food, fine wines, live music, and silent auctions, and the opportunity to view the beautiful display gardens at the Flower Show the day before it opens to the public.

This year, the Foundation is collaborating with the Seattle Audubon Society on its Flower Show display garden, "Birdsong," which will celebrate the diverse bird habitat and species found in the Washington Park Arboretum (see page 5). We are also partnering with Seattle Audubon for Opening Night, and offering our special member pricing to Audubon members.

Early "Bird" Ticket Prices: General admission tickets for Foundation and Audubon members cost \$65 when purchased before January 20, 2012; Member tickets will be \$75 thereafter. General admission for

Non-Members is \$100. Dinner is not included as part of the general admission benefits. Members and Non-Members are encouraged to dine before they come to the event—but also to save room for lots of tasty desserts and wines!

Val Easton Interviews the Show Judges: Along with exclusive viewing of the display gardens, complimentary parking and coat check, and a delicious buffet dinner, our Patron and Benefactor ticket holders will get to enjoy a special-highlights interview with the judges of the 2012 Show by acclaimed garden writer Valerie Easton just prior to viewing the display gardens in the main exhibit hall. Find out what special garden features caught the judges' eyes this year and where the trends in horticulture are headed. Patron tickets cost \$250; Benefactor tickets are \$500.

Tickets go on sale on Wednesday, December 7. You can purchase them by phone at 206-325-4510, online at

www.arboretumfoundation.org, or over the counter in the Arboretum Shop (open daily, 10 a.m. to 4 p.m.).

Party Tickets Make Great Gifts: Wondering what to buy the plant lovers and green thumbs on your holiday list? It doesn't get much better than a trip to Opening Night to enjoy the display gardens at the Show minus the crowds, while sipping a glass of fine Chardonnay. Your gift will also be an important donation, helping us to fund the maintenance of the Arboretum and its education programs for the year to come. ☺

Opening Night is presented by the Arboretum Foundation as a benefit for Washington Park Arboretum.



Opening Night Party

At the Northwest Flower & Garden Show

Join us Tuesday, February 7, at the Washington State Convention Center

TICKET LEVELS AND BENEFITS

— General Admission —

\$65 Early "bird" rate Foundation & Audubon Members;
\$75 for Members after January 19th; \$100 Non-Members

- 6:30 to 7:30 p.m. / Hosted wine reception, live entertainment, silent auctions in the South Lobby
- 7:30 to 9:30 p.m. / Garden viewing, delectable desserts, hosted wine & entertainment

— Patrons & Benefactors —

\$250 Patrons; \$500 Benefactors

- 5:00 to 6:00 p.m. / Exclusive reception with live entertainment, and silent auctions in the South Lobby
- 6:00 to 6:30 p.m. / "Highlights of the 2012 Show," with Val Easton
- 6:30 to 7:30 p.m. / Exclusive garden preview and buffet dinner
- 7:30 to 9:30 p.m. / Continued garden viewing, auction bidding, and entertainment

News and Notes

Beavers Galore in the Wetlands

The UW Botanic Gardens' second annual "Bioblitz in the Arboretum" took place on October 23 and 24. Volunteers came from near and far to help catalog the plant and animal diversity in the Arboretum. The results are still being tallied, but among other findings, the volunteers confirmed that there are at least 13 beavers living in the wetlands. "We found most of them hanging out by that funky metallic sculpture on the north side of the 520," said event organizer and UWBG education supervisor Patrick Mulligan. The next bioblitz is scheduled for spring 2013. Says Patrick, "We've decided to alternate yearly between spring and fall events in order to capture a more complete picture of the biodiversity in the Arboretum, and also to avoid over-taxing our pool of specialist helpers."

Foundation Hires New Events Manager

The Foundation is pleased to announce the hiring of Kristin Price as our new Events Manager. Kristin arrives with tons of experience, having produced events for local non-profits and businesses more than 15 years. Her previous job was as the marketing and events coordinator for the City of Lynnwood Parks, Recreation, and Cultural Arts. Kristin is an experienced social media communicator and has already set up a Twitter feed for the Foundation (follow us at <http://twitter.com/#!/ArboretumFound>). "I love the outdoors, special events, and all things Seattle!" says Kristin, "I'm so excited to be doing a job that allows me to combine some of my greatest passions."

An Oral History of the Arboretum

More than 70 people attended an open house presentation of the Miller Library's new oral history of the Arboretum and Center for Urban Horticulture (CUH) on November 1. Largely funded by the Arboretum Foundation, the history project consists of interviews with 20 men and women who've had long-term associations with the Arboretum and/or CUH, including Nancy Davidson-Short, John Witt, Jean



Jean Witt and her daughter Emily Witt Kozie at the open-house reception for the Miller Library's new oral history of the Arboretum and CUH. (Photo by Stephanie Jeter)

Witt, and Art Kruckeberg. Fourteen of the 20 narrators were present at the open house, which was held at the Library and open to the public. Guests enjoyed a wine reception and were able to listen to clips from the interviews at several audio stations. The interviews will be ready for full public access in January. For full details, contact Carrie Bowman at bowmac@uw.edu or 206-543-0415. You can listen to selected clips from the project interviews at <http://depts.washington.edu/hortlib/collections/oral-history.shtml>. ↪



Gifts & Greens Galore



Friday, December 9, 3—7 PM
Saturday, December 10, 10 AM—2 PM
Graham Visitors Center

The Arboretum Foundation's beloved holiday sale returns in early December. The sale offers a wonderful selection of botanical decorations, including wreaths, swags, and fresh-cut greens. It's also a showcase for the Arboretum Shop, which features an excellent selection of gardening and nature books, plant-themed jewelry, tools for green thumbs, and much more. At this year's event, you'll also find:

- Live seasonal music by harpist Patricia Jaeger (Friday)
- Free hot drinks and cookies
- Craft activities for kids hosted by UW Botanic Gardens (Saturday)
 - Trunk sale by Four Season Design Group
 - Handmade holiday cards from the Hyde Herbarium
- A special appearance by a jolly, bearded man with a bag of treats (Saturday, 11 a.m. to 1 p.m.)

Free admission and parking • All sales benefit Washington Park Arboretum

News and Notes

Day of Caring Volunteers Help Beautify the Arboretum



POWER IN NUMBERS:

More than 100 volunteers helped restore the Arboretum during Day of Caring.

United Way of King County staged their annual Day of Caring event on Friday, September 16—and Washington Park Arboretum was a hive of volunteer activity. More than 100 volunteers, representing Microsoft, AT&T, Nordstrom, and the Japan Business Association of Seattle (JBAS), descended upon the Arboretum and worked from 9 a.m. to 1 p.m. on several different maintenance projects.

The JBAS volunteers weeded more than 1,100 linear feet of pathway in the new Pacific Connections Garden at the south end of the Arboretum; Microsoft employees removed seven monster truckloads (one truckload = three cubic yards) of invasive blackberry from Rhododendron Glen and spread 36 cubic yards of mulch around trees in the Pinetum; Nordstrom volunteers used wheelbarrows to haul and spread mulch on more than 5,000 square feet of planting beds in Azalea Way; and workers from AT&T pulled out three truckloads of blackberry from the Holly Collection, and also weeded and mulched a nearby native restoration planting bed.

Gardeners from the UW Botanic Gardens and Seattle Parks and Recreation supervised the maintenance work, while the Arboretum Foundation coordinated volunteer recruitment and job assignment with United Way. Thanks to all the volunteers for their hard work!

Search the Arboretum Collection Online

Wondering if there's a spice bush (*Lindera benzoin*) or an Italian maple (*Acer cappadocicum* ssp. *lobelii*) growing in the Arboretum, and where on the grounds you might find it? Now there's an easy way to find out. The UW Botanic Gardens collections database for the Arboretum is available online at <http://depts.washington.edu/uwbg/gardens/BGBase.php>. You can search for plants in the database by common name, scientific name, accession number, or specimen location. Each species is linked to coordinates on a grid map, so you can trace the location of the plant during your visit. Printable grid maps will be available on the webpage soon. ↻

What's Happening

Gifts & Greens Galore

Saturday, December 9, 3—7 PM
Saturday, December 10, 10 AM—2 PM

Northwest Flower & Garden Show

Washington State
Convention Center

Opening Night Party

Tuesday, February 7, 5—9:30 PM
(start time varies with ticket prices)

Arboretum Display Garden

February 8—12

Display Garden Plant Sale

Saturday, February 18, 10 AM—2 PM

Early Bloomers Plant Sale

Saturday, April 14, 10 AM—2 PM

— ONGOING EVENTS —

ARBORETUM PLANT SALES

Pat Calvert Greenhouse
Tuesdays & Thursdays, 10 AM—NOON

Plant Donations Nursery
Closed for the season
Accepting donations again March 14
Reopening for sales April 4

Guided Arboretum Walks

1st and 3rd Sundays, 1 PM, GVC lobby
Call 206-543-8800 to confirm

Master Gardeners Clinic

Saturdays/Sundays, NOON—4 PM,
GVC lobby

Native Plants Study Group

4th Mondays, 10 AM—NOON

All events occur at the Graham Visitors Center unless noted. Call 206-543-8800 for information on Arboretum events; 206-543-8801 for family and youth education programs or guided walks; 206-685-8033 for adult learning opportunities.

New Developments

Gala Auction Update

Opening Night at the Flower & Garden Show is just around the corner (February 7), and already we have received some wonderful donations for our silent auction from local businesses and friends. These include:

- Four tickets to see the Mariners from the owner's box
- A getaway to Victoria, B.C.
- Mt. Rainier winter getaway
- Private wine tasting at Hoodspout Winery
- Garden tour with John Wott, Director Emeritus of the Arboretum
- Tea for four in the Georgian Room
- MANY unique gardening items and gift certificates
- Restaurant cards

Thanks to all who have given so generously thus far! We will be accepting donations through January, so please consider contributing. An easy and greatly appreciated donation is a fine **bottle of wine**, which will always sell well at auction. Your donations can be dropped off at the Graham Visitors Center or mailed directly to us at 2300 Arboretum Drive E., Seattle, WA 98112. And of course, any donation is tax deductible. Thank you!

Membership Makes a Great Gift!

Do you have a friend who loves the Arboretum but isn't a member? Or maybe you know someone new to town who'd like to find out more about Seattle. If so, we have a great gift idea for you: Buy them an Arboretum Foundation membership! Memberships start at \$35 and come with numerous benefits, including a subscription to our award-winning horticultural magazine (the *Bulletin*), discounts at local nurseries and businesses, special member-only events, and discounted tickets to Opening Night, our Flower Show preview gala. If you purchase a membership valued at \$75 or more at Gifts & Greens Galore (December 9 and 10), you'll receive a free copy of the beautiful book, *The Wild Within: Wetlands of the Washington Park Arboretum*. By bringing your friends into our member community, you will be supporting all that we do for the Arboretum as well as giving your friend a valuable connection to this Seattle treasure.



THANKING OUR LEAD MEMBERS

Neal Lessenger, Judy Phillips, and Bruce Balick at the 2011 Arbor Circle Celebration, held on September 8 at the Seattle Japanese Garden. Fifty guests attended this year's event and enjoyed a lovely fall evening, delicious Asian food in the Tateuchi Room, and talks by Foundation Executive Director Paige Miller and Director Emeritus of the Arboretum John Wott. For the first time, we invited our Legacy Circle members to join in the celebration. Special thanks to the staff of the Seattle Japanese Garden for accommodating this event, which acknowledges the vital support provided by our lead members and donors. For information on how to become an Arbor Circle or Legacy Circle member, visit our website (www.arboretumfoundation.org) or contact our Development Director, Andrea Myers, at amyers@arboretumfoundation.org or 206-325-4510.

New Members

The Arboretum Foundation welcomes members who joined during the period of September 1 to November 23.

Kay and Mike Brown	Brenda and Hugh Kodama	Tracey Patrick
Walt Bubelis	Jody and David Kris	Clermont Powell, M.D.
Ann Hobson	Julie Lutz	Kristin Price
Eve Alyson Ishizuka	Katherine Norgaard	Michele Marielle Riordan
Patricia Jafari	Eleanor E. Owen	Barbara Saario
Karen J. Jensen	Christopher Page	Jacqueline Schneider
Mary Kennedy	Jason Page and Quincy Hunt	Stephanie Sowl
Mrs. Omie Kerr		

To renew or enhance your membership, please call 206-325-4510 or visit www.arboretumfoundation.org.



2012 Display Garden

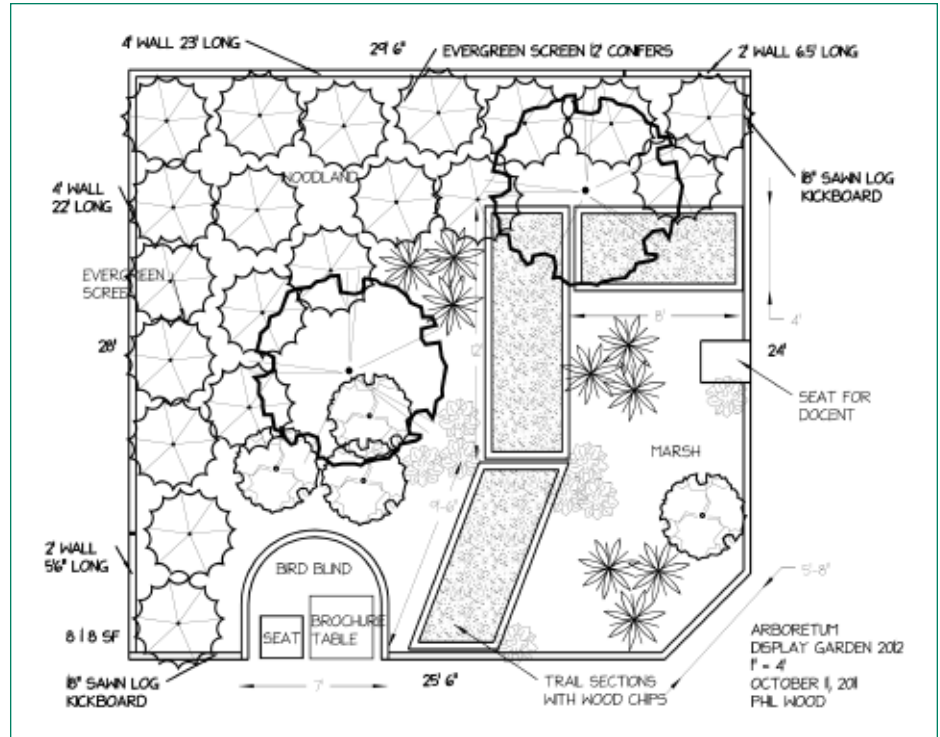
BIRDS OF THE ARBORETUM

Each year, the Washington Park Arboretum creates a unique display garden for the Northwest Flower & Garden Show. For its exhibit in the 2012 show, the Arboretum is joining forces with the Seattle Audubon Society (www.seattleaudubon.org), a non-profit organization working to protect regional birds and nature through conservation advocacy. Entitled “Birdsong,” the display will educate viewers about some of the beautiful bird habitats and bird species found in the Arboretum’s 230 acres.

The display will depict three distinct bird habitats—marshland at the shore of a lake, woodland edge, and deeper forest—and will be designed to evoke a specific place in the Arboretum: the Marsh Walk to Foster Island. A pathway composed of wood chips will pass alongside the marsh component of the display. Native flowering currants, mahonias, dogwoods, and other edge-habitat plants will grade up from the marsh to a woodland backdrop. A madrone snag will provide nesting cavities and food for insect-feeding birds. A bird blind will be the only structure, offering shelter to view wildlife and a place for docents to sit.

Carved replicas of bird species will be used to demonstrate the nesting and feeding behavior of some of the Arboretum’s most beloved avian dwellers. Actual bird nests will also be used to enhance the realism of the display. “Birdsong” will be a teaching tool for any urban gardeners wishing to welcome birds into their own backyards.

As a habitat garden, it will provide food for birds in the form of berries, seeds, nectar, and insects; shelter, nesting, and perching sites in the form of shrubs, trees, and standing dead wood; water for drinking and bathing in the form of the marsh shoreline. Signage with QR-code technology will



Drawing by Phil Wood

Display Garden Plant Sale

Saturday, February 18
10 a.m. to 2 p.m.

Graham Visitors Center

Want to attract birds to your garden and help restore local biodiversity? One thing you’ll need to do is grow plants that provide birds with food and other habitat resources. At our annual post-Flower-Show sale, you can purchase many of the bird-friendly plants featured in our display garden at great prices! ☺

AVIAN HABITAT: The 2012 display garden, a collaboration with Seattle Audubon, will highlight the bird habitat and species of the Arboretum.

connect viewers with smart phones to specific information on the Arboretum Foundation’s website about each featured bird’s habitat and feeding requirements.

The garden will be designed by Phil Wood, Roger Williams, and Bob Lilly—the same trio who created the Arboretum’s 2011 Flower Show display. That garden, “The Japanese Garden: Bridging History,” was awarded a Gold Medal by the show judges and also won the *Pacific Horticulture Magazine Award*.

See “Birdsong” at the Washington State Convention and Trade Center from February 8 to 12. Visit the Northwest Flower & Garden Show website, www.gardenshow.com, for admission time and ticketing information.

The Arboretum display garden is produced by the Arboretum Foundation with assistance from our partners at Seattle Parks and Recreation and the University of Washington Botanic Gardens. ☺

VOLUNTEER VINE



YOUNG RECRUIT: Volunteer Jenefer Hutchins introduces her grandson at FallAbundance

Thanks to Our Plant Sale Helpers:

Our inaugural FallAbundance Plant Sale took place on September 25. Hosted by the Pat Calvert Greenhouse and Plant Donations Nursery, the sale was a big success. Despite traffic worries surrounding a visit to Seattle by



Arboretum Shop
WASHINGTON PARK ARBORETUM

HOT ITEMS FOR THE WINTER SEASON

- New selection of Silver Seasons jewelry
- Hand-knit hats
- Winter scarves in a variety of styles
- Holiday gifts for everyone on your list!

OPEN 10 AM TO 4 PM DAILY
Ten percent discount for Foundation members

President Barack Obama that day, turnout was strong and sales were better than predicted. A number of volunteers new to the Arboretum also pitched in. Thanks to all our great sale volunteers. Your efforts help us to sustain this wonderful place!

Opening Night and Display Garden Volunteering: Recruitment of volunteers for our Opening Night Party (February 7) and for the Arboretum display garden at the Northwest Flower & Garden Show (February 8 to 12) will begin in mid-December. Contact Randall Hitchin at 206-325-4510 or rhitchin@arboretumfoundation.org for more information. ⇨

What's In My Garden 🌿

Dr. John Wott, Director Emeritus of the Arboretum, current member of the *Bulletin* Editorial Board, and Father Christmas at this year's Gifts & Greens Galore

What is in your garden this season? My front garden is almost all woody ornamentals. The *Garrya × issaquahensis* (see profile on back cover) will bloom in early January, followed by the *Edgeworthia*. There is also *Sarcococca hookeriana*, which always surprises me with its sweet fragrance when I open the door on a mid-January morning. This is followed later by *Fothergilla × intermedia* and in early summer by one of Seattle's tallest *Eucryphia*. The back garden is anchored by three 30-foot *Trachycarpus* palms, several unusual tree-form *Viburnum* species, and a *Calycanthus chinensis*. The many perennials are now going to bed.

What is your favorite season to garden? I really enjoy the spring, when I look out into my back garden and each morning see new plants emerging. There is a progression of bulbs. The many bare patches, covered in winter with a layer of organic matter, soon turn into a jungle of changing colors and textures.

Can you recommend a good gardening or nature book? I am a voracious reader of garden magazines and am always on the lookout for "what's new." I also often cruise through the latest books on gardening techniques in the Miller Library. I love many of the Timber Press books for technical details... and then too, I am big internet searcher.

When did you start volunteering at the Arboretum? I arrived in Seattle on April 23, 1981, a bright and beautiful sunny day. My first professional talk was for the Arboretum Foundation Annual Spring Meeting in a restaurant near Lake Union. For many years, I volunteered in managing the check-out lines at the plant sales, when they were still all held in the Arboretum, making sure no one jumped the queue. One year, when the line reached into Foster Island Drive, I learned some new "words" from some Broadmoor golfers late for their tee time.

What is your favorite thing about volunteering at the Arboretum? My favorite thing has been meeting all the people—over 30 years' worth—making life-long friends, and telling visitors about the importance of the Arboretum. I love to lead tours, showing off the plants and outlining the history of the Arboretum, and telling visitors about the people who have made it so wonderful. ⇨



UWBG Events & Classes

Art Exhibit: Handmade Ceramics and Jewelry

December 1 to 17, Elizabeth C. Miller Library

Center for Urban Horticulture (CUH), 3501 NE 41st Street, Seattle

UW Botanic Gardens graduate student Katie Murphy and UWBG alumna Morea Christenson will display hand-crafted, botanically themed ceramics and jewelry in the Miller Library from December 1 to December 17. Murphy blends her two passions, plants and soil, to create functional ceramic art. Her latest collection is inspired by the colors of autumn and shapes of nature. Christenson's jewelry also derives inspiration from elements and processes in nature. Her newest line blends the old with the new, transforming vintage trinkets, brooches, and jewels into one-of-a-kind accessories. For more information, call 206-543-0415 or visit www.millerlibrary.org.

Landscape Design Series

Saturdays, January 21 to February 27, 9:30 a.m. to Noon, CUH

Have you ever wanted to design your own landscape? This hands-on series, taught by designer and environmental horticulturist Nancy Tom, will show you how—from developing a plan to choosing plants suitable for your soil and home. Each class will include a lecture and time to work on your plan. Fee: \$175, early-bird discount; \$190 after January 6. For more information or to register, call 206-685-8033, email jrobins@uw.edu, or visit www.uwbotanicgardens.org.



NATURE-INSPIRED ART: Katie Murphy's handmade ceramics will be on display at the Miller Library in December. (Photo by Katie Murphy)

Introduction to Landscape Tree Identification

Saturday, February 18, Noon to 3 p.m.
Washington Park Arboretum

How many times have you seen a tree and wondered what it is? This class, led by UW Botanic Gardens education coordinator Patrick Mulligan, is designed to give you the basic knowledge you need to figure out the identity of landscape trees found in the Seattle area. It will begin indoors with a brief presentation covering tree ID basics. This will be followed by a guided walk in the Arboretum to reinforce the lessons covered in the presentation. Please dress for the weather. Fee: \$40, early-bird discount; \$45 after February 12. For more information or to register, call 206-685-8033, email jrobins@uw.edu, or visit www.uwbotanicgardens.org. ↔

Arboretum Foundation

2300 Arboretum Drive East
Seattle, WA 98112-2300
Tel: 206-325-4510 Fax: 206-325-8893
info@arboretumfoundation.org
www.arboretumfoundation.org

Office Hours: M-F, 8:30 AM–4:30 PM
Graham Visitors Center/Gift Shop:
10 AM–4 PM, daily
Information Hotline: 206-543-8800

FOUNDATION OFFICERS

President: Della Balick
Vice President: Fred Isaac
Vice President: Beth Morgan
Vice President: Paul (Skip) Vonck
Treasurer: Craig Trueblood
Secretary: Iris Wagner
Immediate Past President: Barbara Wright

FOUNDATION STAFF

Paige Miller: Executive Director
Niall Dunne: Communications Manager
Randall Hitchin: Volunteer and Outreach Program Manager
Andrea Myers: Director of Development
Kristin Price: Events Manager
Cheri Shanahan: Major Gifts and Development Coordinator
Cynthia Welte: Volunteer and Annual Giving Coordinator
Julia White: Operations Coordinator
Dan Yuly: Finance Manager

WASHINGTON PARK ARBORETUM

is managed cooperatively by University of Washington Botanic Gardens and City of Seattle Parks and Recreation, with support from the Arboretum Foundation.

GROUND WORK is a publication of the Arboretum Foundation.

Editor: **Niall Dunne**
Design: **Constance Bollen/cbgraphics**
Photos: **AF staff or as credited**

Useful Phone Numbers

Arboretum Offices/Graham Visitors Center: 206-543-8800
Japanese Garden: 206-684-4725
Master Gardeners Hotline: 206-296-3440
Miller Library: 206-543-0415
Plant Answer Line: 206-897-5268
UW Botanic Gardens: 206-543-8616
Volunteer Info: 206-616-4890

PRINTED ON 100% POST-CONSUMER RECYCLED PAPER 



Washington Park Arboretum
2300 Arboretum Drive East
Seattle WA 98112-2300
www.arboretumfoundation.org

NONPROFIT ORG.
U.S. POSTAGE
PAID
SEATTLE, WA
PERMIT NO. 126

Winter 2012



*The Arboretum Foundation promotes,
protects and enhances the
Washington Park Arboretum
for current and future generations
by strengthening and building a diverse
and engaged community of donors,
volunteers and advocates.*

Begin or renew a membership at www.arboretumfoundation.org

Arboretum Scene

Garrya × issaquahensis

Like winter icicles or streaks of rain frozen in time, the catkins of *Garrya × issaquahensis* perfectly capture the mood of the season in which they bloom. This remarkable plant, a hybrid between *Garrya fremontii* and *G. elliptica*, embodies the great cold hardiness of the former parent and the improbably long and graceful catkins of the latter. *Garrya × issaquahensis* makes a tough, adaptable, drought-tolerant evergreen shrub, from 6 to 10 feet high and wide. Its aspect is pleasant throughout the year and it reliably “steals the show” in mid-winter. As with all *Garrya* species, this hybrid is dioecious, meaning that the male and female flowers are found on separate plants. And from the garden perspective, this plant forms something of an “old boys club”: Male plants are far more eye-catching and commonly grown, though the females have a quiet beauty, especially when bearing their clusters of purple-black berries. The great English plantsman Graham Stuart Thomas has deemed *Garrya × issaquahensis* among the very best winter-blooming broadleaf-evergreen shrubs. But despite its international acclaim, this plant is of local origin, arising in two Seattle area gardens in the late 1950s and early 1960s. Peak bloom is in January and February. A great place to see it in the Arboretum is in the Witt Winter Garden. ↪

—Randall Hitchin, Arboretum Foundation



PHOTO BY JOY SPURR